

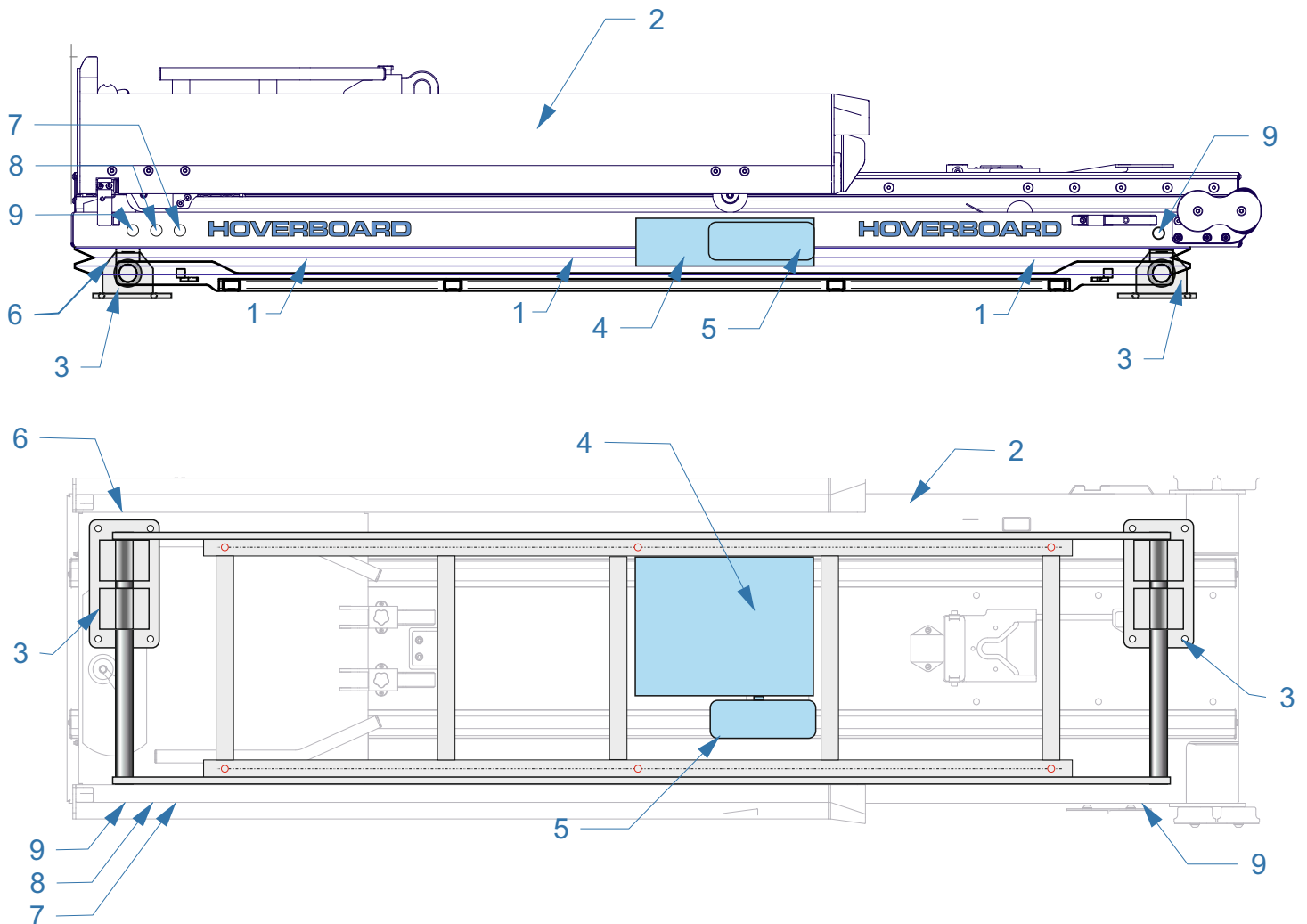


General information

- * It is essential that you and any other operator of this product read and understand the content of this manual before installing and using this product !
- * In order to avoid operating errors, these manual must be accessible to the staff at all times.
- * The hoverboard should only be used for the purpose as described. Please refer particularly to the instructions of the used stretcher.
- * The illustrations do not necessarily correspond to the delivered equipment and are not true to scale.
- * We take no liability for damages caused by operating errors or incorrect assembly or repair.
- * Please pay close attention to the country-related, applicable safety regulations for patient transfer.
- * Subject to technical changes.

Specification

- 1... Pneumatic suspensions with automatic weight adjustment from 40-520 kg/88-1146 lbs and hydraulic shock absorbers. Total vertical stroke 170 mm/6.7"
- 2... Stretcher mounting platform
- 3... Lateral movement device with pneumatic release (option)
- 4... Switch box, contains:
 - a) Relay, 12V
 - b) Magnetic valves 12V
 - c) Terminal block
- 5... Air pressure tank (approx. 1.0 litres/0.26 gal) with pressure switch
- 6... Reed switch
- 7... Blue main switch (option)
- 8... Red toggle switch for highest (rigid) position (option)
- 9... Pushbuttons for pneumatic release of the lateral movement device (option)



Technical data

- * Custom Hoverboard for Kartsana powerBRAVA®
- * Height lowered: 135 mm - 5.3"
Height when active: 230 mm - 9.1"
Height for reanimation (rigid): 310 mm - 12.2"
- * Length: 2050 mm - 80.7"
- * Total weight 142/170 kg - 313/375 lbs
- * Maximum loading capacity 520 kg / 1146 lbs (incl. stretcher)
- * Ignition AND main switch ON: Device ready
Ignition OR main switch OFF: Device lowered (e.g. for loading)
- * Electrical connection: **Dimension of all wires must be at least 2,5 mm² !**

Brown = ground (wire no. 31)
Red = permanent positive (for charging the Kartsana powerBRAVA®
and release of the lateral movement device)
fused in the vehicle with 15A (wire no. 30)
Orange = ignition positive, fused in the vehicle with 30A (wire no. 15)

Never connect the ignition line together with permanent positive !
This could lead to consequential damages, which are not covered by warranty !
- * The valve-control-circuit is internally fused with 5A
- * Max. power consumption 25A at 12V DC

Disinfection and cleaning

- * Disinfection and cleaning of the Hoverboard shall be performed according to the regulations of the respective country.
- * Never use **disinfectants containing chloroacetic acid** or other corrosive substances !
- * In case of malfunctions, please contact our hotline

Phone +43-660- 800 9000

Mail info@hover.at

www.hover.at

Starting up

- * After successful assembly and electric connection, start ignition of vehicle and turn on the blue main switch.
- * The compressor will fill the air supply tank to approx. 8,5 bar/120 psi within about 1 minute and the Hoverboard is ready (suspended mode). The compressor running time from empty tank to top position is up to 2:40 min.
- * The Hoverboard works automatically --> when the air pressure has lowered to approx. 8 bar/115 psi, the compressor starts automatically for approx. 10 seconds again. This allows constant operating pressure.
- * By turning off the ignition or the blue main switch, the hoverboard automatically lowers for loading and unloading. It also lowers when you unlock the PowerLoad on the hoverboard.
- * During regular air suspended drive, the red toggle switch (option) is set off. For lifting the Hoverboard to highest position (e.g. for reanimation) switch it on.

ATTENTION:

When lifting to the highest position, the compressor runs continuously for approx. 2:40 minutes. Multiple lifting in short intervals will overheat the compressor ! The thermal protection switch will turn off the compressor and needs approx. 1 hour to cool down !

- * By pushing one of the pushbuttons, the lateral movement device (option) will unlock pneumatically. While keeping pushed, you can sway the Hoverboard crosswise in 8 positions of 32 mm / 1,25" (total = 256 mm / 10"). Releasing the button means locking in the nearest position. This option also works with ignition off. In case of malfunction or lack of air pressure you may unlock it by the knobs.
- * For correct loading and unloading please refer to the instructions of the stretcher. Please pay attention to the correct locking of the stretcher on the Hoverboard.

Suspension

Top position

Unlock lateral

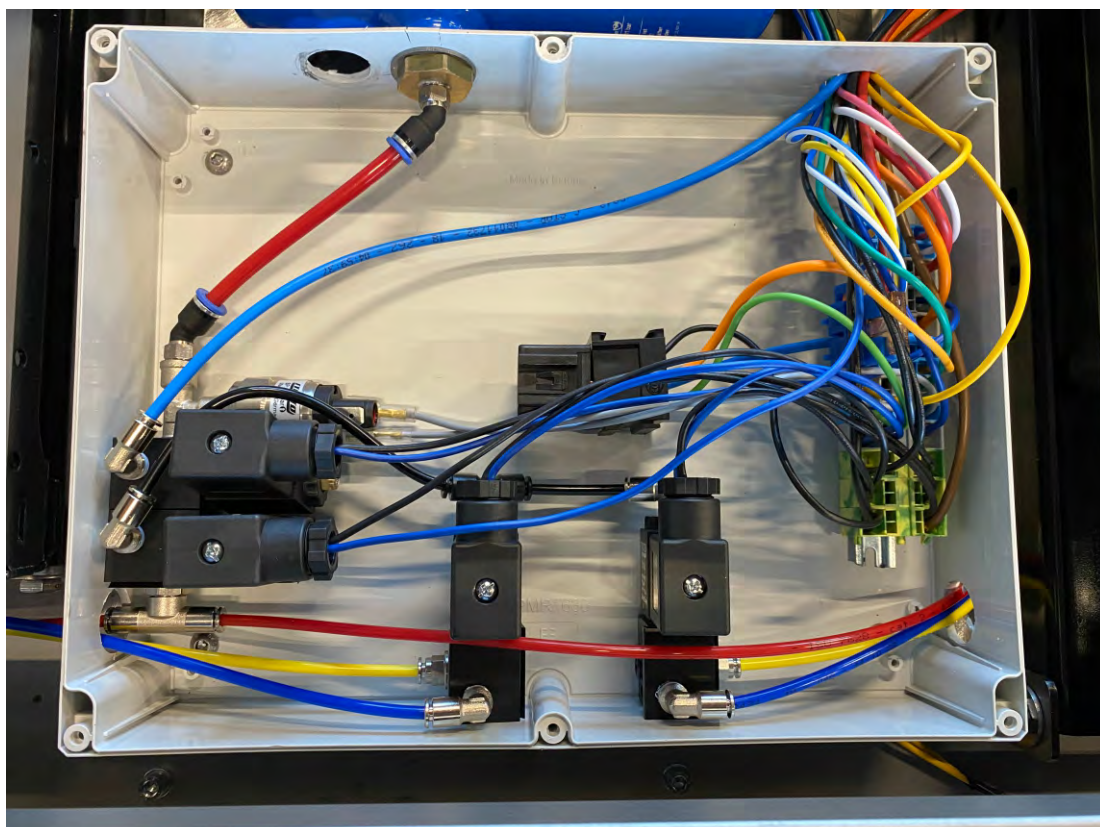


on/off

on/off

movement device

Have always a good trip with your new
HOVERBOARD®



Connectiopn layout

target	colour	cross-section		target	colour/cross-section
ground (31)	brown	2,5		compressor	black 2,5
RA mag. valve	black	1,0		relay (86)	black 1,0
LMD mag.valve	black	1,0		mag. valve 1	black 1,0
powerBRAVA	braun	2,5		mag. valve 2	black 1,0
toggle switch	black	1,0		main switch	black 1,0
				mag. valve 1	blue 1,0
toggle switch	blue	1,0		mag. valve 2	blue 1,0
pressure switch	grey	1,0		relay (85)	green 1,0
pressure switch	grey	1,0			
main switch	green	1,0		reed switch	yellow 1,0
main switch	orange	1,0		fuse 5A	orange 1,0
relay (87)	light blue	2,5		compressor	red 2,5
				relay (30)	orange 2,5
ignition (15)	orange	2,5		fuse 5A	orange 1,0
				LMD sw. front	ye-wt 1,0
LMD mag.valve	blue	1,0		LMD sw. rear	blue-white 1,0
powerBRAVA	blue	2,5		LMD sw. front	ye-wt 1,0
positive (30)	red	2,5		LMD sw. rear	blue-white 1,0
toggle switch	white	1,0		reed switch	yellow 1,0
toogle switch	pink	1,0		RA mag.valve	blue 1,0

Spare parts



Air suspension
30620 > with shock absorber
30621 > without shock absorber



30311 air cushion



30057 magnetic valve block



30058 magnetic valve 1



30059 magnetic valve 2



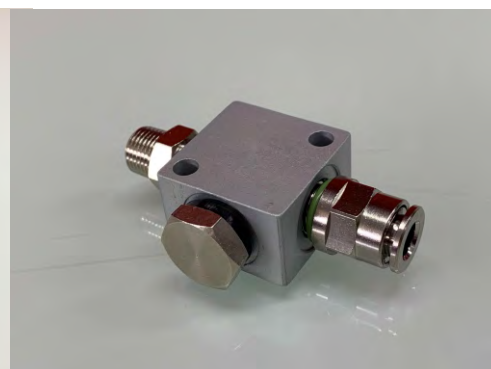
30209 external compressor
(without Box)



30291 level control valve



30292 valve control bow



30272 air fittings

Spare parts



30302 adjustable shock absorber



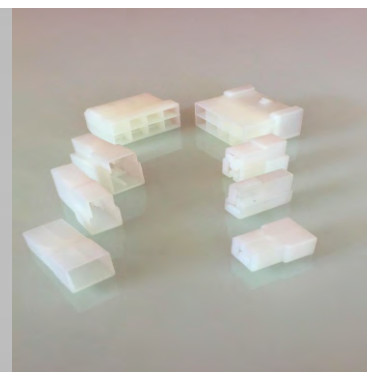
30072 Reed switch
30073 Block magnet



31270 terminal grey
31272 terminal blue
31271 terminal green-yellow



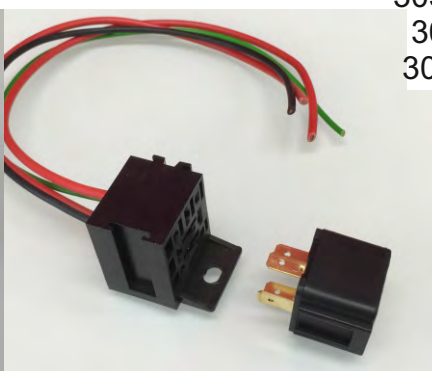
30251 fuse holder
30252 fuse 30A
30253 fuse 5A



30500 connector 2 pins, T, f
30501 connector 3 pins, T, f
30502 connector 2 pins, ger., f
30504 connector 2 pins, T, m
30505 connector 3 pins, T, m
30506 connector 2 pins, ger., m
30508 connector 10 pins, f
30509 connector 10 pins, m



31020 quick connector 4-4-4
31021 quick connector 4-4
31022 quick connector 6-6



30520 relay
30530 relay holder



31283 cord clip

Spare parts



35010 main switch (blue)

35011 toggle switch (red)

35012 LMD pushbutton

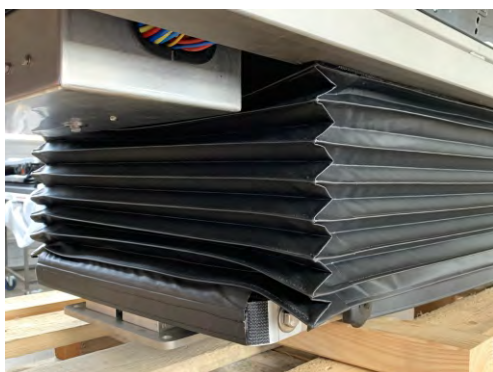


30244 pressure tube 4 mm, red
30245 pressure tube 4 mm, blue
30246 pressure tube 4 mm, yellow
30240 pressure tube 6 mm, red

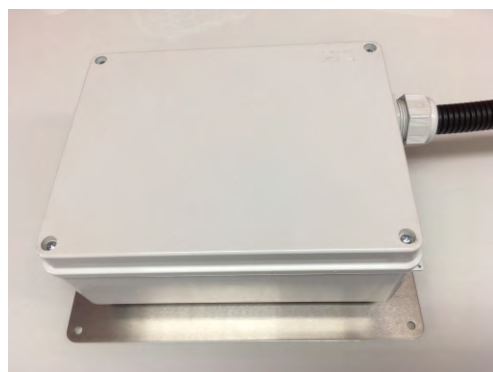
30248 teflon tube,
white
31080 thermal protection-
tube, red

30066 pressure switch,
pre-adjusted 8,5 bar

Spare parts



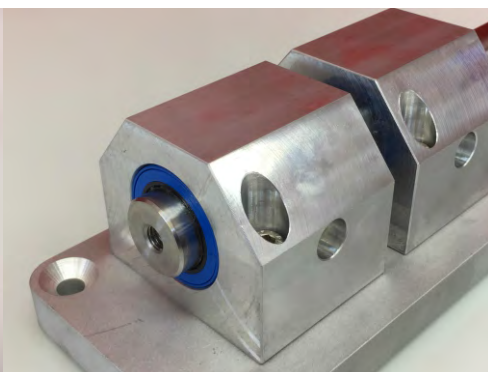
30084 bellows



30221 box for external compressor
(without compressor)



31011 LMD pneumatic cylinder



31030 linear bearing



31040 knob



51031 toothcomb back
51041 toothcomb front



51062 locking bolt
