

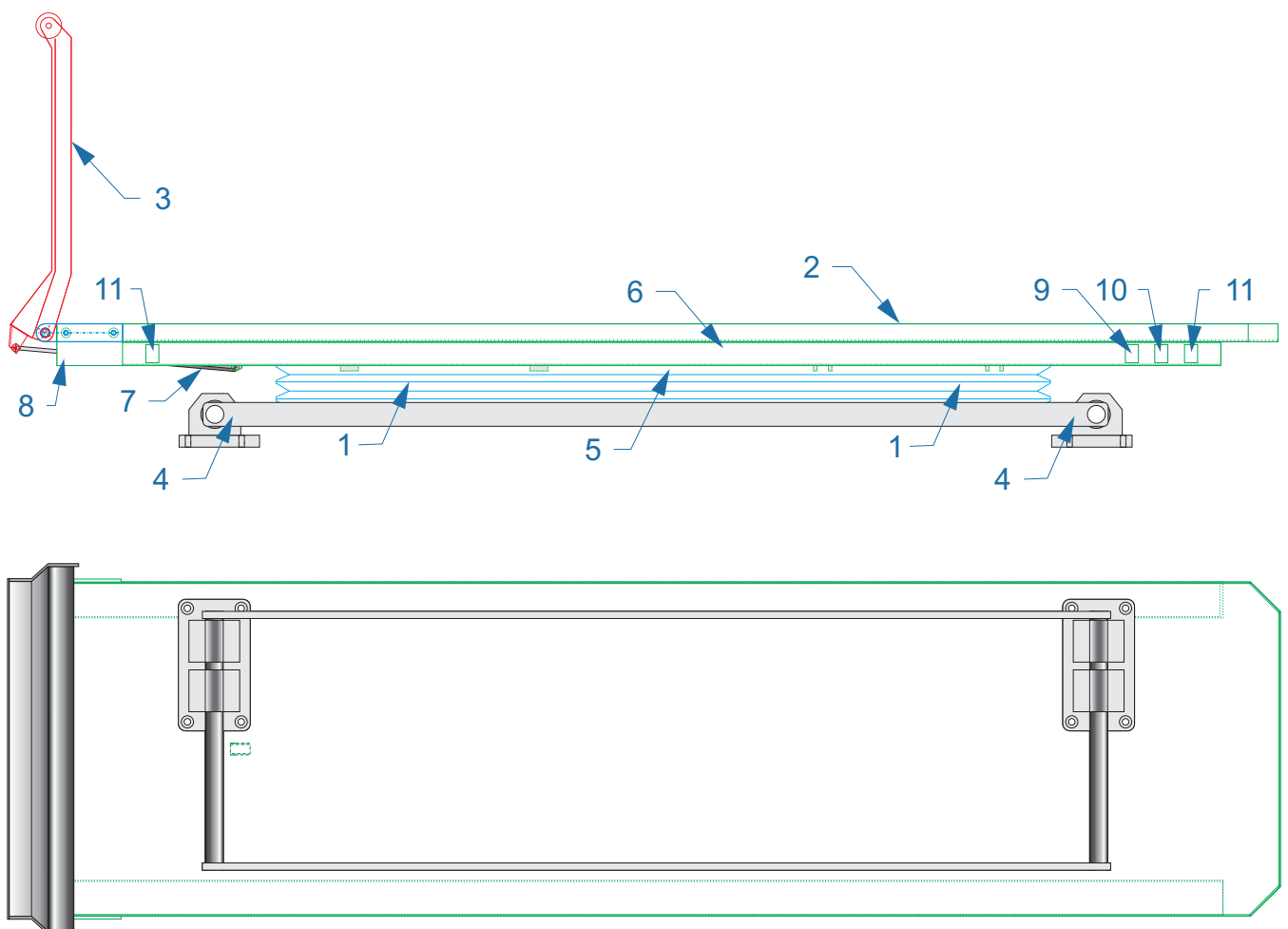


General remarks

- * It is essential that you and any other operator of this product read and understand the content of this manual before installing and using this product !
- * In order to minimize operation errors, this manual must be accessible to the staff at all times.
- * The Hoverboard is only to be used as instructed.
Please refer particularly to the user manual of the stretcher.
- * Descriptions do not necessarily depict contents and are not true to scale.
- * We take no liability for damages caused by operating errors or incorrect assembly.
- * Please pay close attention to the country-related, applicable safety regulations for patient transfer.
- * Subject to technical changes.

Specification

- 1... Pneumatic suspensions with automatic weight adjustment from 40 to 400 kg and hydraulic shock absorbers. Total vertical stroke 180 mm.
- 2... Stretcher mounting panel
- 3... Loading ramp with cylindric roller
- 4... Pneumatic cross movement device (option), adjustment range 255 mm in 8 positions
- 5... Switch box, contains:
 - a) compressor 12V DC, 25A with check valve and integrated thermal overload protector.
 - b) relay 12V DC
 - c) magnetic valves 12V DC
 - d) terminal block
 - e) noise insulation
- 6... Air pressure tank (4 litres) with pressure switch
- 7... Gas spring
- 8... Micro switch (option)
- 9... Main switch (option)
- 10... Toggle switch for highest position (e.g. for reanimation) (option)
- 11... Pushbutton switch for pneumatic unlocking of the cross motion



Technical data

- * Standard Hoverboard for assembly of various stretchers according to EN 1865 combined with their approved fixation.
- * Height lowered: 140/180 mm - 5,5/7,1" without/with lateral movement device
Height when active: 240/280 mm - 9,5/11,0" without/with lateral movement device
Height for reanimation: 320/360 mm - 12,6/14,2" without/with lateral movement device
- * Total length including closed loading ramp ~ 2140 mm.
- * Total weight 80/103 kg - 176/227 lbs without/with lateral movement device
- * Maximum loading capacity 400 kg (incl. stretcher)
- * Ignition AND main switch ON: Device ready
Ignition OR main switch OFF: Device lowered (e.g. for loading)
- * Electric connection: **All wires must be at least 2,5 mm² !**
brown = ground (wire no. 31)
red = permanent positive (for pneumatic unlocking of the lateral movement device, **fused in the vehicle with 10A** (wire no. 30)
orange = ignition positive, **fused in the vehicle with 30A** (wire no. 15)

The valve-control-circuit is internally fused with 5A
- * Max. power consumption 25 A at 12 Volt DC

Disinfection, cleaning and maintenance

- * Disinfection and cleaning of the Hoverboard shall be performed according to the regulations of the respective country.
- * The Hoverboard does not require further maintenance.
In case of faults or queries, please send a mail to

info@hover.at

- * For complete **repair instructions to download** please refer to

www.hover.at

Starting up

- * After successful assembly and electric connection, start ignition of vehicle and turn on the green main switch (option).
- * The compressor will fill the air supply tank to approx. 8,2 bar within about 2 minutes and the Hoverboard is ready.
- * The Hoverboard works automatically --> when the air pressure has lowered to approx. 7,5 bar, the compressor starts automatically for approx. 15 seconds again. This allows constant operating pressure.
- * By turning off the ignition or the green main switch (option) or opening the loading ramp, the Hoverboard is automatically lowered to allow easy and energy-efficient loading and unloading.
- * During regular air suspended drive, the toggle switch (option) is set on I. For lifting the Hoverboard to highest position (e.g. for reanimation) switch it to II.
- * By pushing one of the pushbuttons, the lateral movement device (option) will unlock pneumatically. While keeping pushed, you can sway the Hoverboard crosswise in 8 positions of 32 mm (total = 256 mm). Releasing the button means locking in the nearest position. This option also works with ignition off. In case of failure or lack of air pressure you may unlock it by the knobs.
- * For correct loading and unloading please refer to the instructions of the stretcher. Please pay attention to the correct locking of the stretcher on the Hoverboard.

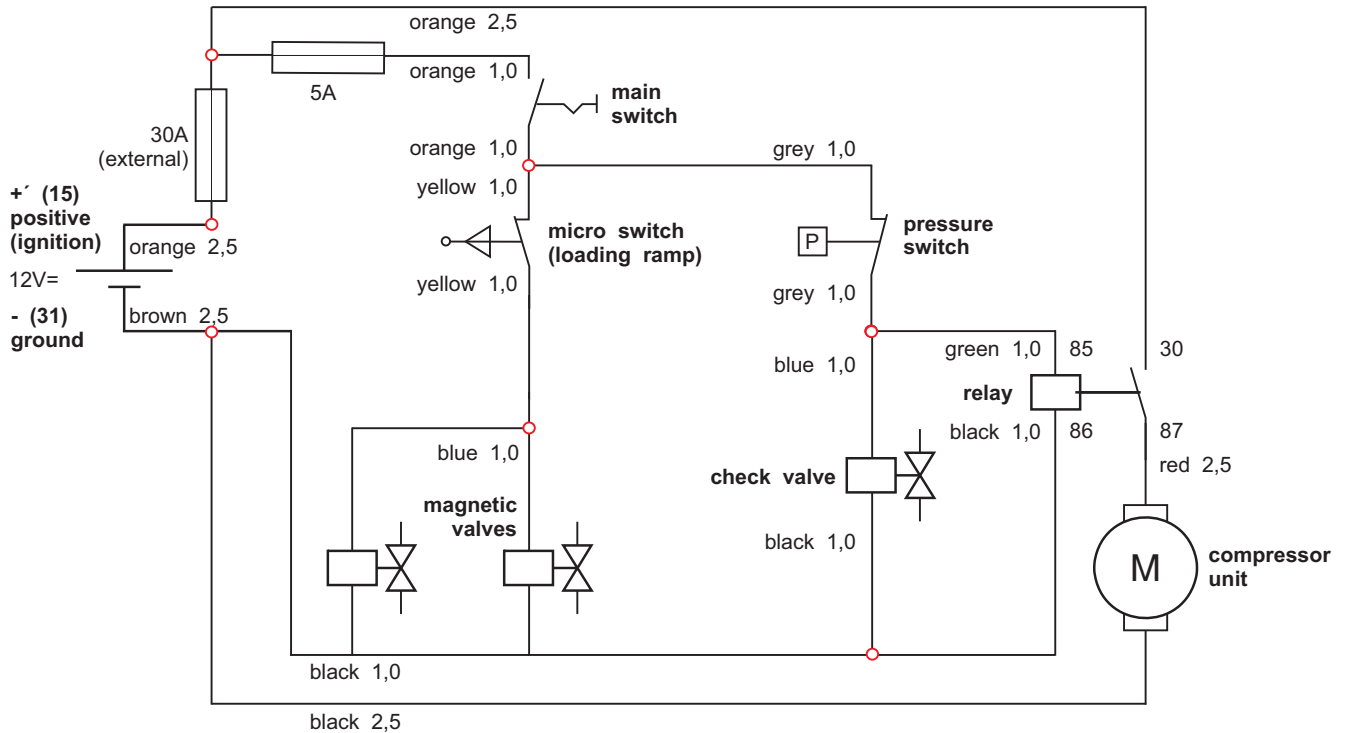
CAUTION !

**The stretcher should always be held
when opening the loading ramp !**



**Have always a good trip with your new
HOVERBOARD®**

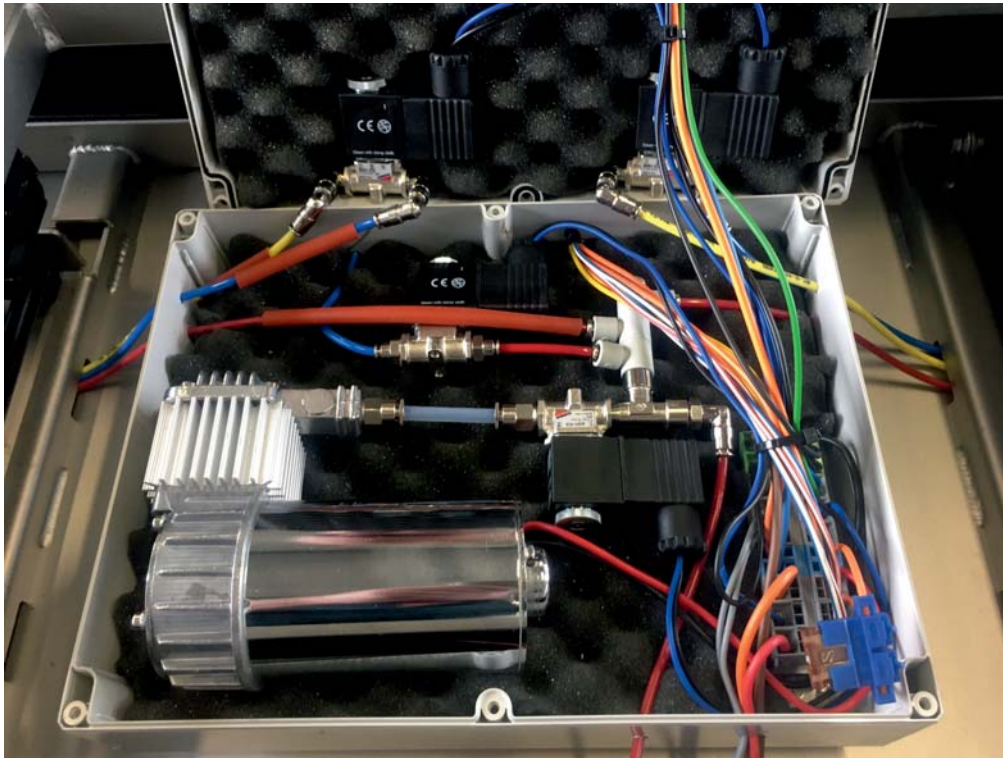
Circuit diagram



Connection layout

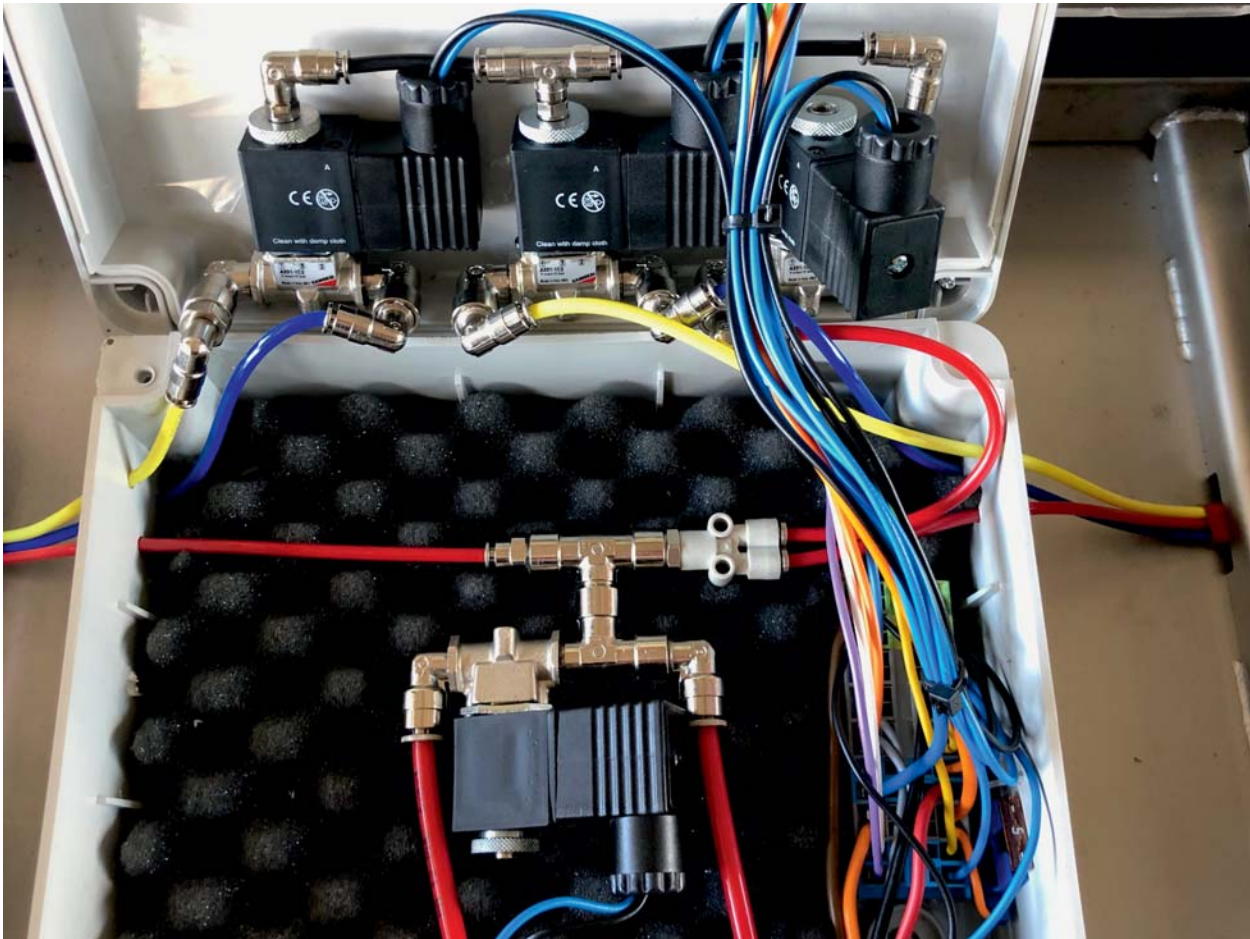
target	colour	cross-section	target	colour/cross-section
ground (31)	brown	2,5	compressor	black 2,5
			relay (86)	black 1,0
			mag. valve 1	black 1,0
mag. check v.	black	1,0	mag. valve 2	black 1,0
			mag. valve 1	blue 1,0
micro switch	yellow	1,0	mag. valve 2	blue 1,0
			relay (85)	green 1,0
pressure switch	grey	1,0	mag. check v.	blue 1,0
pressure switch	grey	1,0		
main switch	orange	1,0	micro switch	yellow 1,0
main switch	orange	1,0	fuse 5A	orange 1,0
relay (87)	blue	2,5	compressor	red 2,5
			relay (30)	orange 2,5
ignition (15)	orange	2,5	fuse 5A	orange 1,0

Connection layout



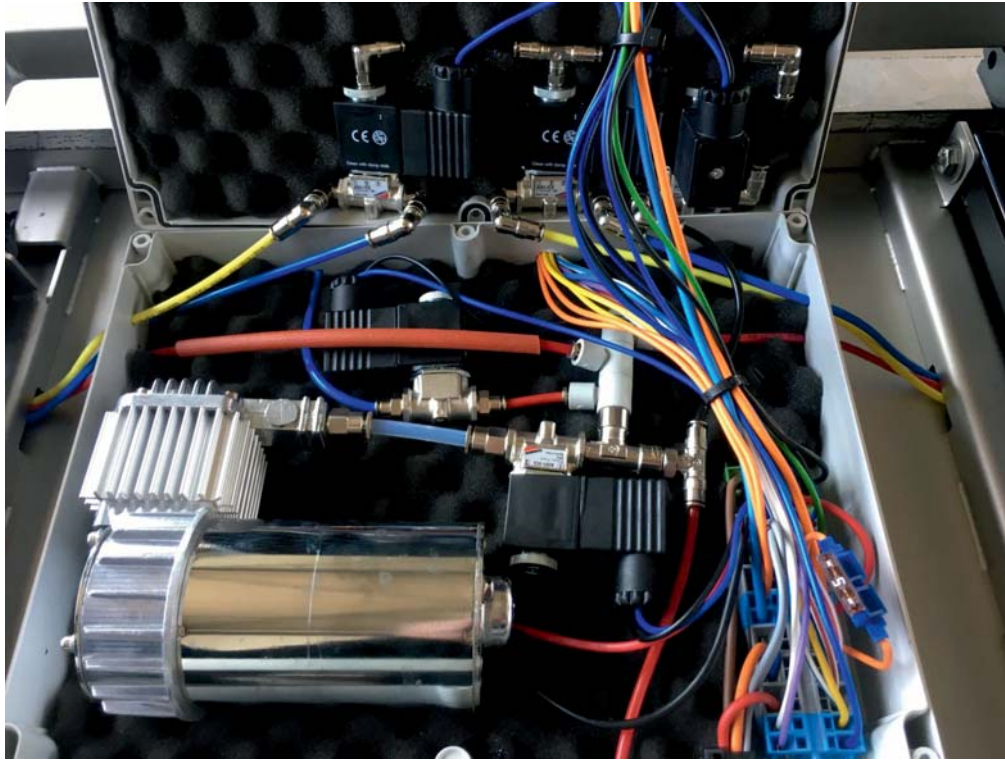
target	colour	cross-section	target	colour/cross-section
ground (31)	brown	2,5	compressor	black 2,5
mag. v. LMD	black	1,0	relay (86)	black 1,0
mag. check v.	black	1,0	mag. valve 1	black 1,0
			mag. valve 2	black 1,0
micro switch	yellow	1,0	mag. valve 1	blue 1,0
			mag. valve 2	blue 1,0
pressure switch	grey	1,0	relay (85)	green 1,0
pressure switch	grey	1,0	mag. check v.	blue 1,0
main switch	orange	1,0	micro switch	yellow 1,0
main switch	orange	1,0	fuse 5A	orange 1,0
relay (87)	blue	2,5	compressor	red 2,5
			relay (30)	orange 2,5
ignition (15)	orange	2,5	fuse 5A	orange 1,0
			LMD switch front	red-white 1,0
mag. v. LMD	blue	1,0	LMD switch back	blue-white 1,0
			LMD switch front	red-white 1,0
positive (30)	red	2,5	LMD switch back	blue-white 1,0

Connection layout



target	colour	cross-section	target	colour/cross-section
ground (31)	brown	2,5	compressor	black 2,5
mag. valve up	black	1,0	relay (86)	black 1,0
			mag. valve 1	black 1,0
mag. check v.	black	1,0	mag. valve 2	black 1,0
			mag. valve 1	blue 1,0
toggle switch	blue	1,0	mag. valve 2	blue 1,0
			relay (85)	green 1,0
pressure switch	grey	1,0	mag. check v.	blue 1,0
pressure switch	grey	1,0		
main switch	orange	1,0	micro switch	yellow 1,0
main switch	orange	1,0	fuse 5A	orange 1,0
relay (87)	blue	2,5	compressor	red 2,5
			relay (30)	orange 2,5
ignition (15)	orange	2,5	fuse 5A	orange 1,0
toggle switch	white	1,0	micro switch	yellow 1,0
toggle switch	violet	1,0	mag. valve up	blue 1,0

Connection layout



target	colour	cross-section	target	colour/cross-section
ground (31)	brown	2,5	compressor	black 2,5
mag. valve up	black	1,0	relay (86)	black 1,0
mag. v. LMD	black	1,0	mag. valve 1	black 1,0
mag. check v.	black	1,0	mag. valve 2	black 1,0
			mag. valve 1	blue 1,0
toggle switch	blue	1,0	mag. valve 2	blue 1,0
			relay (85)	green 1,0
pressure switch	grey	1,0	mag. check v.	blue 1,0
pressure switch	grey	1,0		
main switch	orange	1,0	micro switch	yellow 1,0
main switch	orange	1,0	fuse 5A	orange 1,0
relay (87)	light blue	2,5	compressor	red 2,5
			relay (30)	orange 2,5
ignition (15)	orange	2,5	fuse 5A	orange 1,0
			LMD switch front	red-white 1,0
mag. v. LMD	blue	1,0	LMD switch back	blue-white 1,0
			LMD switch front	red-white 1,0
positive (30)	red	2,5	LMD switch back	blue-white 1,0
toggle switch	white	1,0	micro switch	yellow 1,0
toggle switch	violet	1,0	mag. valve up	blue 1,0

Spare parts



Air suspension
30620 > with shock absorber
30621 > without shock absorber



30311 Air cushion



30053 Check valve



30054 Magnetic valve



30063 Pressure switch,
pre-adjusted



30207 Compressor



30291 Level control valve



30292 Valve control bow



30271 Air fittings

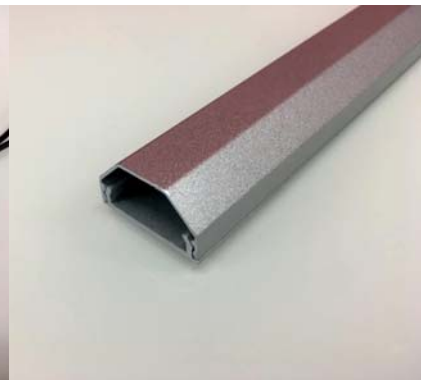
Spare parts



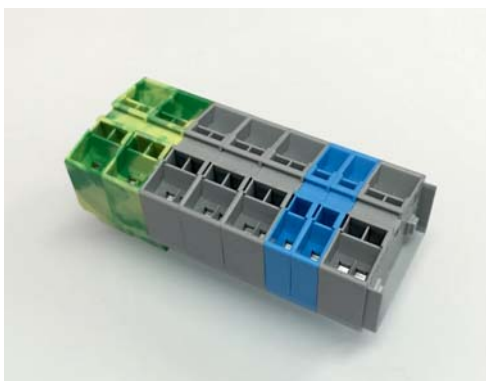
30071 Micro switch



30072 Reed switch
30073 Bar magnet



30091 Cable conduit



31270 Terminal grey
31271 Terminal green-yellow
31272 Terminal blue



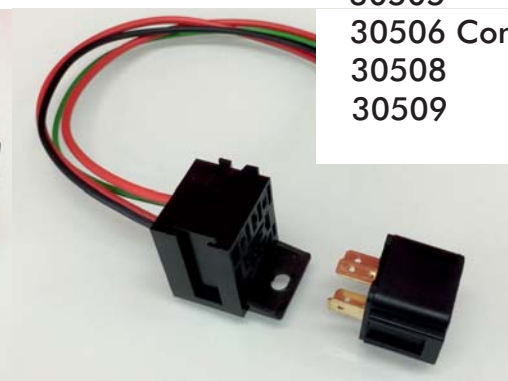
30251 Fuse holder
30252 Fuse 30A
30253 Fuse 5A



30500 Connector 2 pins, T, f
30501 Connector 3 pins, T, f
30502 Connector 2 pins, even, f
30504 Connector 2 pins, T, m
30505 Connector 3 pins, T, m
30506 Connector 2 pins, even, m
30508 Connector 10 pins, f
30509 Connector 10 pins, m



30268 Dummy cover
30267 Main switch green
30265 Toggle switch (I-II)
30266 Pushbutton (^)



30520 Relay
30530 Relay holder

Spare parts

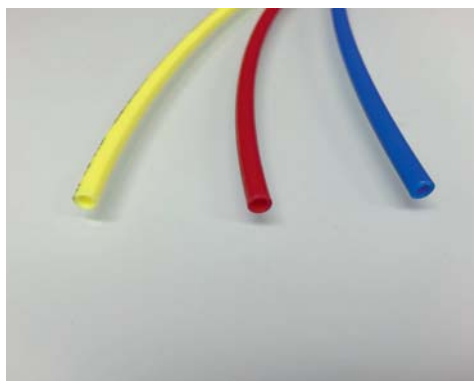
30081 Rubber bellows
30082 Fabric bellows



30222 Switch box internal
(240 x 190 mm)
30221 Switch box external
(without compressor)



30223 Switch box internal
(230 x 300 mm)



30244 Pressure tube 4 mm, red
30245 Pressure tube 4 mm, blue
30246 Pressure tube 4 mm, yellow



30248 Teflon tube, white
31080 Thermal protection
tube, red



30341 Brass bushing



30342 Cable grommet



30344 Rubber grommet



30352 Plug 30 x 30
30361 Plug 60 x 40

Spare parts



30110 Gas spring 200 N
30112 Gas spring 350 N
30113 Gas spring 450 N

30121 Castor 585 mm
30122 Castor 610 mm

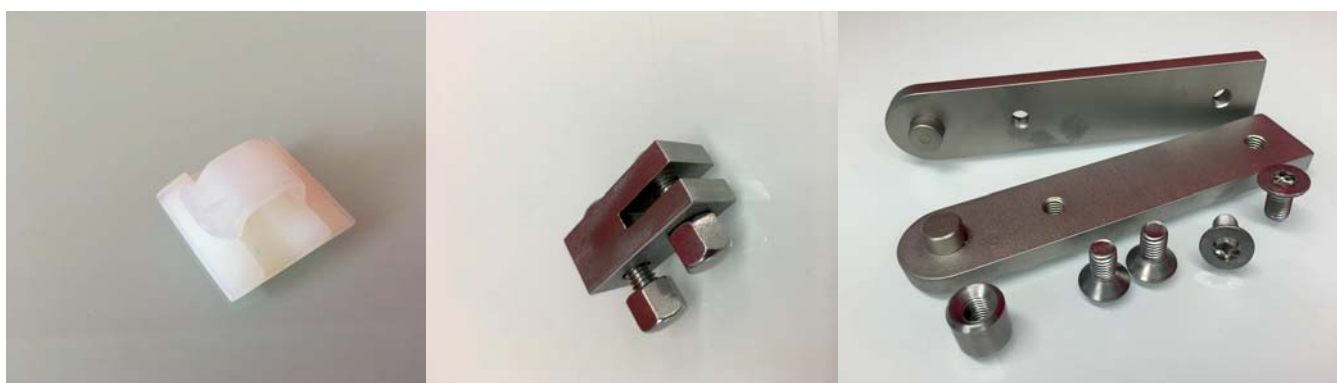
30141 Rubber buffer



30302 Shock absorber,
adjustable

30400 Button 6 mm
30401 Button 8 mm

30541 Stop bolt



31283 Cord clip

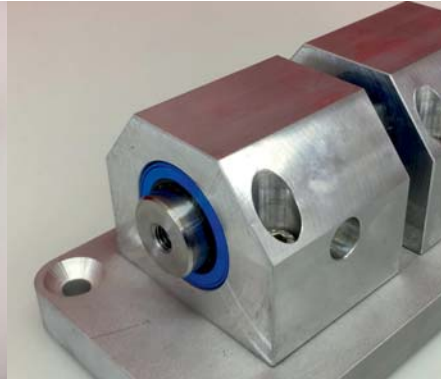
50132 gas spring
extension

50150 Ramp bracket 30 mm
50152 Ramp bracket 20 mm

Spare parts



31010 Pneumatic cylinder



31030 linear bearing



31040 Tommy screw



51030 toothcomb back
51040 toothcomb front



51060 Locking bolt



30249 Helix tube blue
